

AKADEMIA ZANISTA DOSKEDIA DERSIM
Dr Ali KILIÇ, Paris 4 05 2014
Astronomia ma sero
Peida biaise astaru



Astronomia ma çık a? Astarei çık ê? Çutır peida bié? Biana astaru sero çı zoneme? Hard u asmen kei peida bié? kei juvin'ra cera bié? Hard bê asmen, asmen bê hard beno ya ki nê beno? Çına re?

Çıke, Greki vane astronomia, zagone zonaisé astarûna Ἀστρονομία [astronomia]. Eve zovina qêse, astronomia zanista qâytbiaise astarûna. Ekhe henio, çutır qait beme, çı vineme çhime na zonaisê vinitais çık o? Atmosfero khe dŭrio, nino vinitais, çutiri vineme? Mıseme? Eve qâytbiais, mote biais asmen sero, astaru sero zonaiso zanisti beno ya ki nê beno? Ekhe beno, çutır? Eve sene model zonaise hu keme xori? ? Ekhe nê beno çına re?

Seveta astronomia khané hard asmen nê lewine, dina bê şındor nia. Biaise dina atomu ra nê vejia. Nê merdis çino. Seveta astronomia khané atomi nê merdisi ni ê.

Aristoteles, *Peri Ouranou*'de Asmeni sero de vano, **astronomia** penia zanistié osaise naturi sero **η περι φυσως επιστημη φαινεται**, reze girşia çiu, lewiaisê yine sero tede prensibune girşi u qijia yine sero **gureéna και μεγεφη και τουτων ουσα και κινησεις**.¹

Bêguman, astronomia Mezopotamia bingêune matematik sero bena berze ji astronomia Greku ni a. Tij eve zone greki Helios zone latini Sol a sera 74% Hydrojen a. Ma ra duria hu 149 597 870 km wa. Ma Tilsime Raa Simeri de (www.pen-kurd.org, www.gomemis.com) mî na qese rînd areza kerd. Tij je çe Greku, çe made ki bimbareka. Haqô Hélios, haqê raştio, Haqê sisteme Tijio. Filozof Anaxagoras, Aristarqê Samosi Claude Ptolémée, Copernicus, Galilée, Kepler, Newton, Descartes na qeşu sero gurea vi, karzanistai viraşti vi.

Astrophysik théorik hata nîka eve modele analitik sero gureai. Ordinatór sero simulatione mordis (numerik) viraşti. Zonağune astrofiziki wuast khe modelune newu bî vîraze eve kare nê modelu, tilsime asmeni sero, astaru sero karzanista biare ra zon. Peni de tuha dest ne kot, bese nê kerd tilsime asmen u astaru sero zonaiş vîraze, veze biaré vere çımune ma.. Modele hu tól û puç, çewt vejai rié dina. Dodıma, zonağune astrofiziki modele hu vurnai. Vurnaise modelu roşta zonais nê de zonağû. Zonağû no kar a verda.

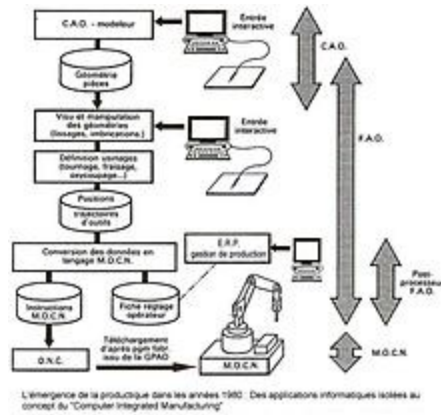
Esmer Akademia Zanista Fransa peida bîaise astaru sero Sempoziume vîrast. Catherine Cesarsky, endama akademi, komita enerji atomik –(kea) Philippe André, endame (kea)Nicolas Peretto, Universita Cardiff, (İngilizistan) Annie Zavagno, Laboratuvare Astrophysika Marsiya, Patrick Hennebelle, endame KEA Saclay David Elbaz, endame KEA Saclay Pierre Encrenaz, endame Akademi peida bîaise astaru sero qesei kerd.

Mî 25 seri na ra avê Paris de Cité des Sciences atelia produktik de aqıldare zanisti u akademik serdar Roger Lesgare (Conseiller scientifique et académique) guréné.

Avê mî systeme atelia produktik analiz bi kerime.

1-Produktik çik o ?

¹ Aristoteles, *Traité du Ciel, Peri Ouranous*, Paris 2004, Flammarion,,208a.



Produktik serune 1980 de veja. Binge na konsepti, deste ingilizi *Computer Integrated Manufacturing*. virajio. Kare palka otomatik, çip, rew, désinde virastena. Laé karkeru makinu eve informatik tê lewe ardena. Produktik, name têdê teknikuna informatikia. ²Eve zovina qese, produktik malçi otomatik peida kerdena.

Atelia Produktika Çe Zanistu³ Paris de 700 mendisune Europa viraşti vi. Uska ez sera 1989 de modelu sero gureu. Atelia de 90 deqâ de zu makina virastene. Waxto khe mî analiz kerd çewtia programmi mî tespît kerde. Systeme atelia lewi, seri nê bi. Systemo hierarşik, waxt werdene. Jede xaxud vi. Mî bingé dai é (base des données) hierarşiki vurnai, bingé dai kerdi paralel. Eve teknikune intelligence artificiel ez gureu. Demiro Polat 460 (°C) degre de vileşieno ro. Mî germinia polati kerde kemi, kerde 260 (°C) degre. Teknike intelligence artificieli tatbiqâte atelia karune deşti kerde. Xeta kari, sît gurenene, xeta mordemi dê wê. Tê dê letê makinu zovina palku'ra mî ardi kerdi zu ca. Mî waxte malçi kerd kilm. Hurendia 90 dêqiqâ de mî zu otomobile Renault 506, 56 dêqude da virastene. Mî karkeri kara né veti, nê eşti tever. Mî karkeri kerdi teknisyeni, teknisyeni kerdi mendisi. Malçi bi jede, mî rekabete Japonia vısna.

² Vatena Centre de productique intégrée du Québec ia.

³ Cité des Sciences

Mı modele produktik sero teoria zonaişê filozofia zanista modelisasyone çimu sero newde dê virastene.

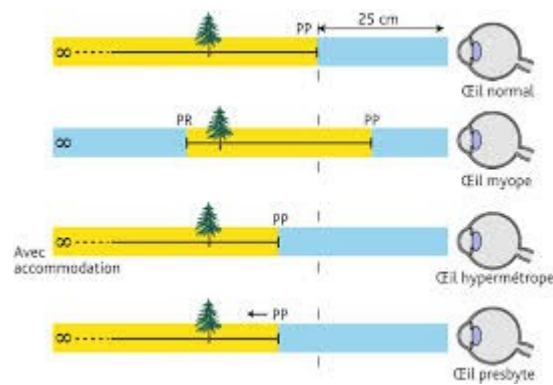
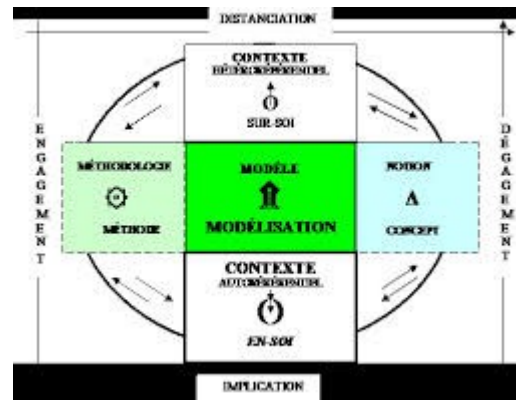
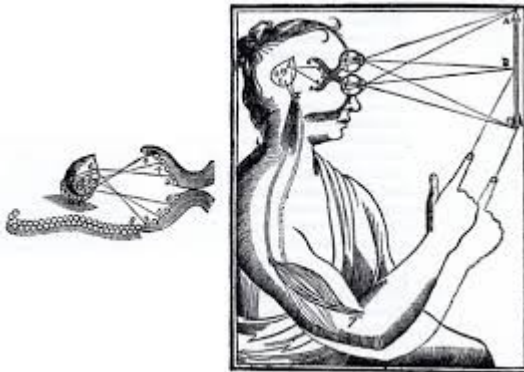
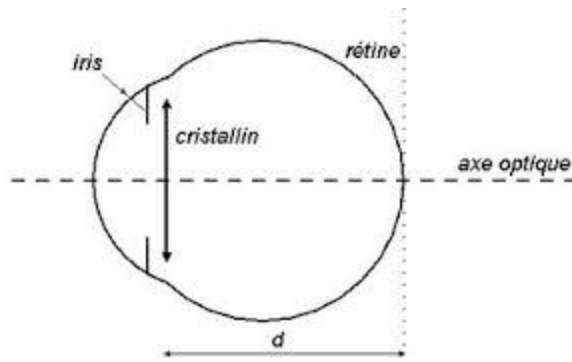
Qese zonaişo khe ez dan pers kerdene: ma çutiri vineme? Çinare çime ma nijdié ma de dorme ma de her çi rınd vinene? Ma 'ra duri, atmosfer de rié Asmen de çio duri o khe esto, çio kosmik bese nê kene bi vine? Na xeta çutiri wedarime khe ma zonaise hu eve teoria newe araze bı kerime. Ma bese nê keme, simulatione mezge mordemi bı virajime, eve modelizasyone çimu, newde teoria zonaişê filozofia zanista bı virajime eve Teknikune intelligence artifisieli asmen ra çiuone kosmiku dos bı kerime? Na doskerdena zanisti, zonaişi ho re qılauz kerime?

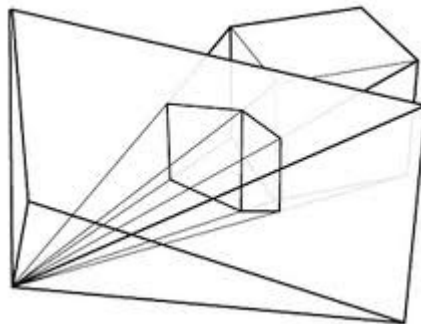
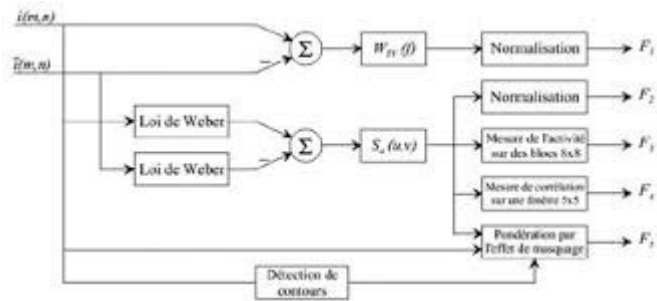
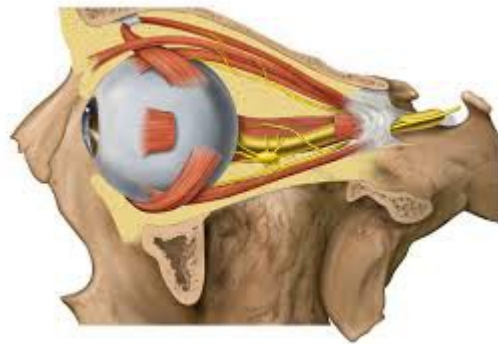
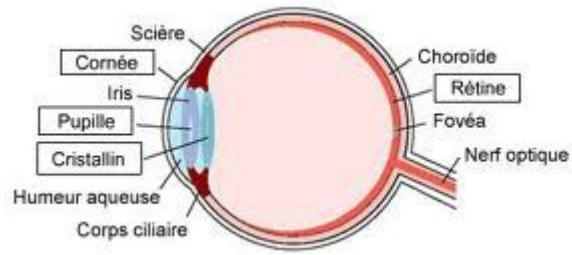
Coka, mı kaptori, sanai mordemu sare. Çari sera kamerai giredai, mı resmi verde darde kerdi, mordemi qait bi, waxto khe çimi lewiai, kamera lewiaisê çimu tesbit kerdi, roştia lazere intelligence artifisieli berd kerdi bande magnetik ser. Mı mordemi vurnai, resmi vurnai, modeli vurnai. Dodıma mı bande magnetik veti. Roştia lazere Intelligence artifisieli roşt ve roşt mı eve zono Smoltook, mı program kerdi. Dodıma mı listing vêti binge matematik sero istatiski vıraşti, onti, analiz kerdi.

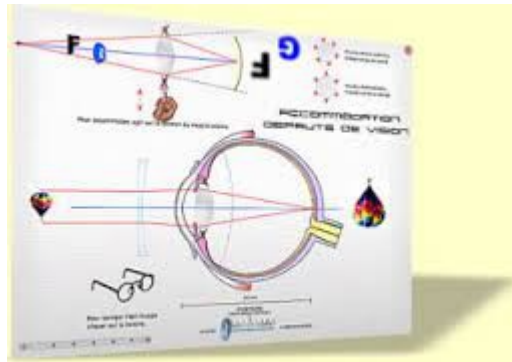
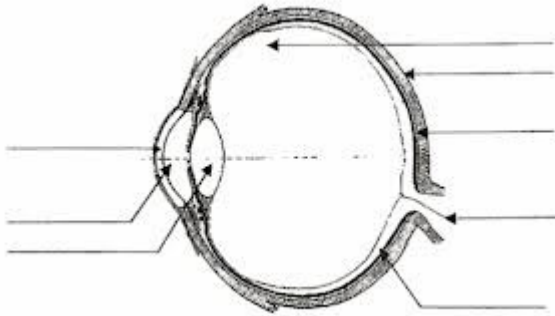
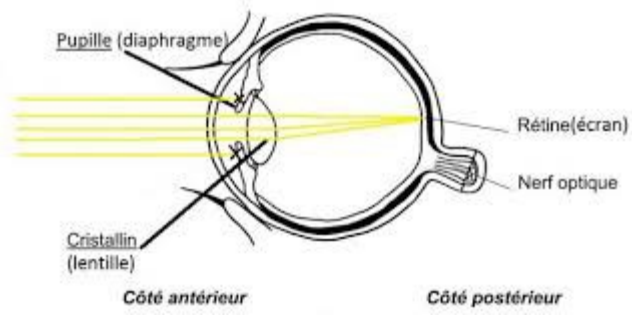
Ma istatistiku sero pers kerd: çına re no mordem, % 25 na hette qaité resmi bio? % 33 amo cer niado? Çinare na hermete %36 mote na heti bia? Hete doti nê bia? Çinare no lazek %50 qaité na guçiki bio? Hete cori de nê niado? çinare na çeneke %49 hete çepi de niado, hete raşti de nê niado?

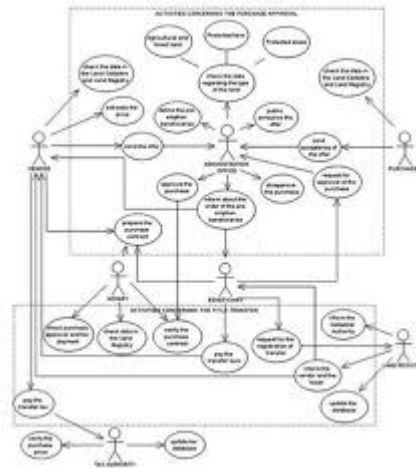
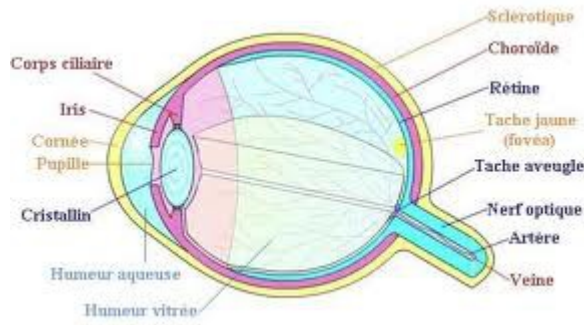
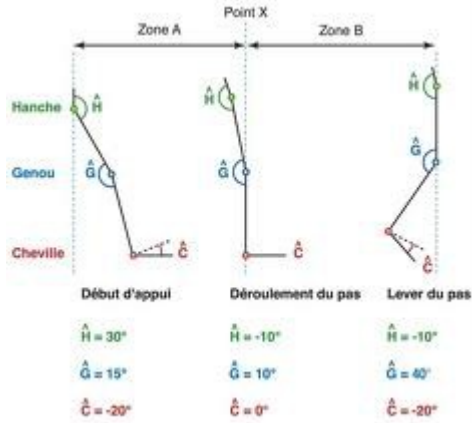
Ma çutiri tever vineme? Tever çutiri eve raa çimu yeno kuno mezge ma? Tever eve raa çimu, çutiri mezge ma ra vejino, sono beno tever? Prinsibe girania famkerdise mezge çike? Mezge ma materialo? Prinsibe materiale mezge ma çike? Zagone materiale tever este çine? Lao dialektiko Prinsibune materiale mezge ma ve zagone dialektike materiale teveri çutır bene zu, çutır juvin zaverdane, bene ağme, yene bene zu? Dür, çutır beno nijdi? Sitimülayone mezge mordemio khe ma asmende kerdo laboratuvare satellitu eve sene zagonune dialekti gureno, astarune kosmiki dano naskerdene? Şema rınd fam bi kerime.

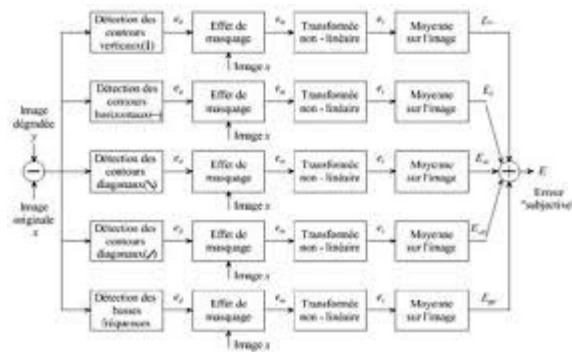
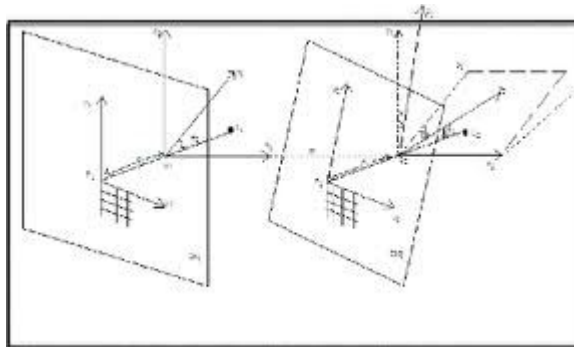
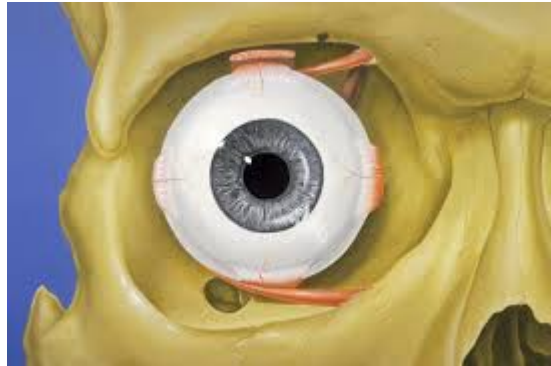
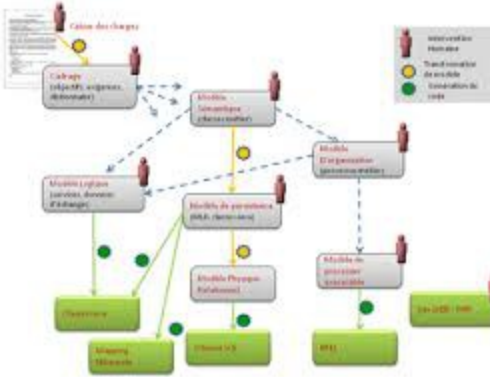
MODELİZASYONE ÇHIMU SEVETA TEORİA ZONAIŞI

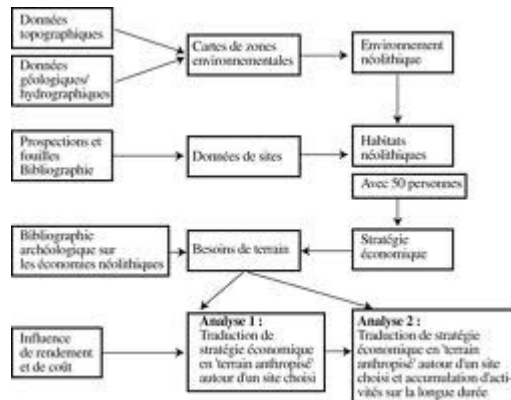
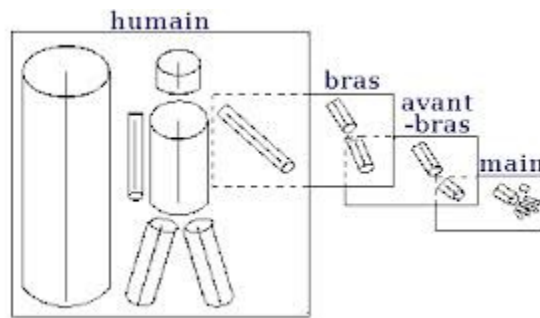
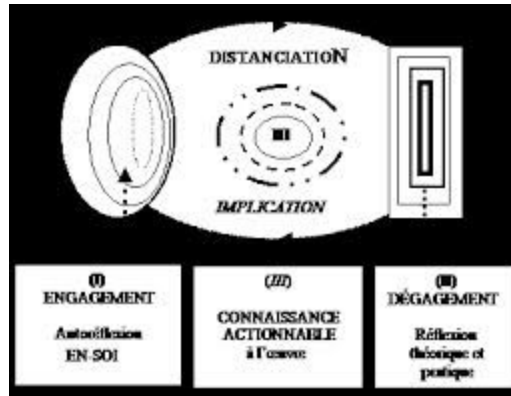


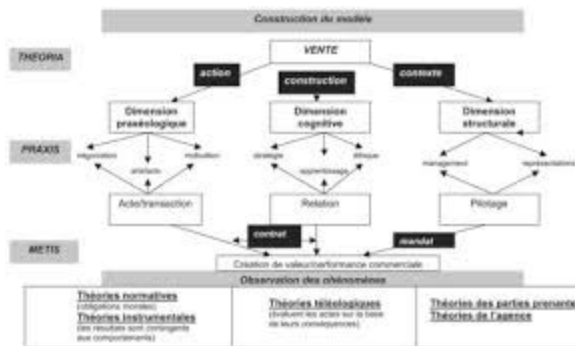
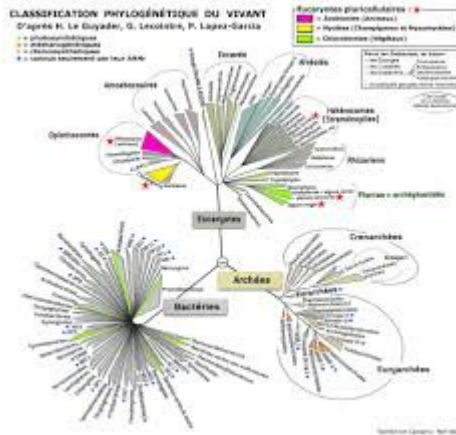
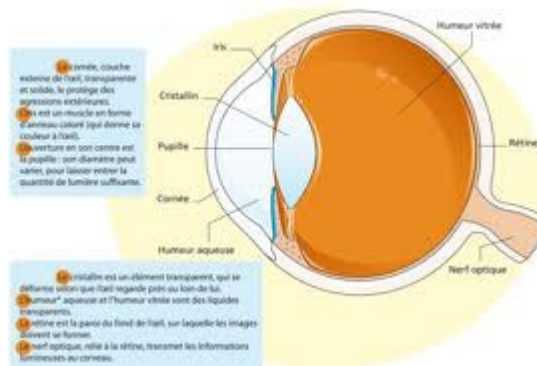
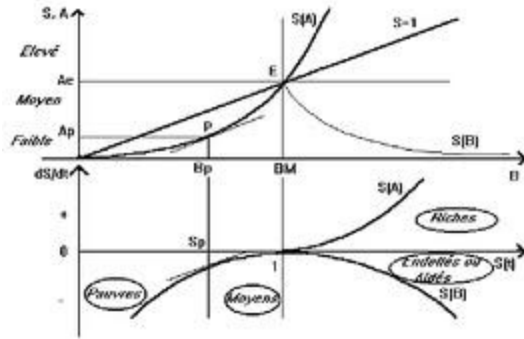






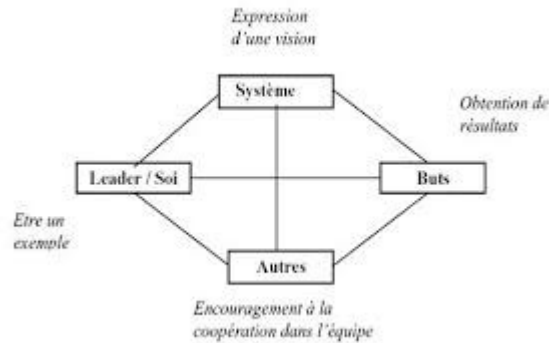
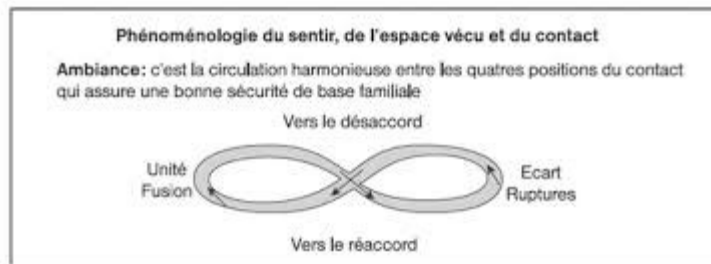


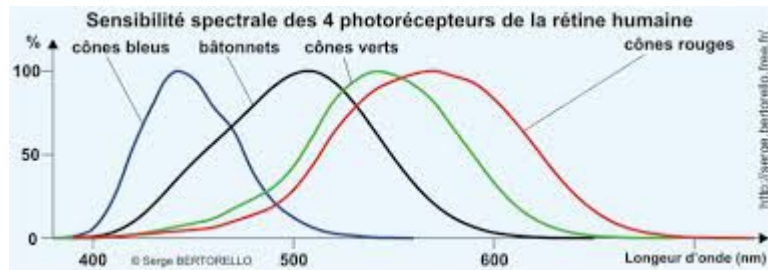
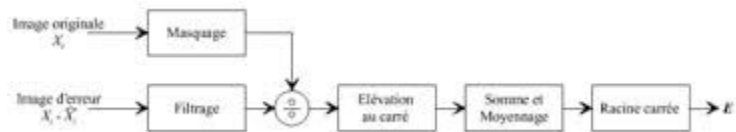
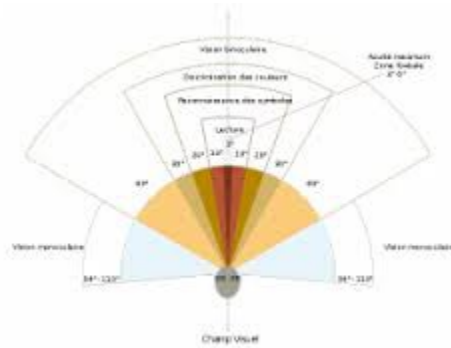
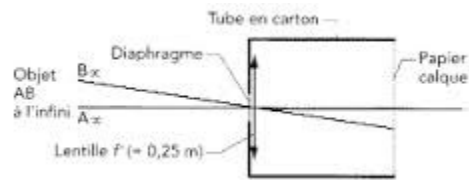
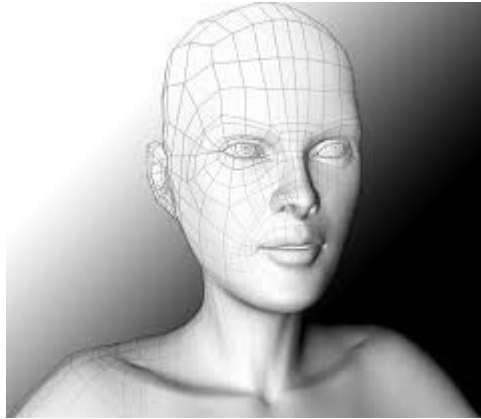


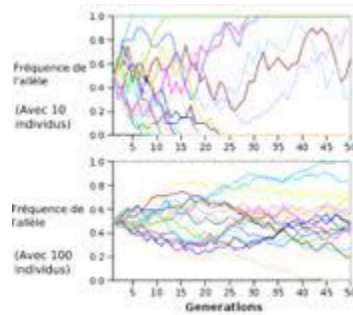
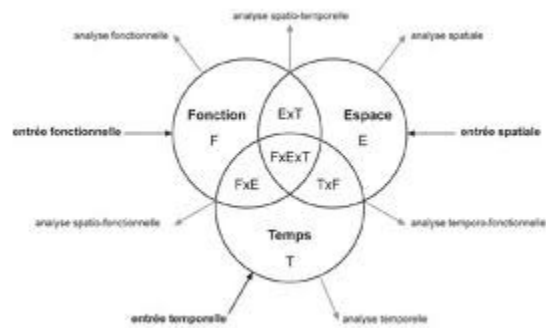
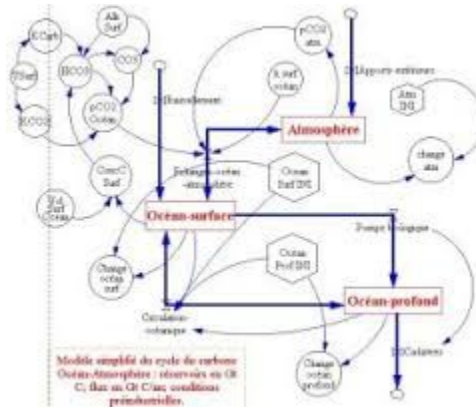


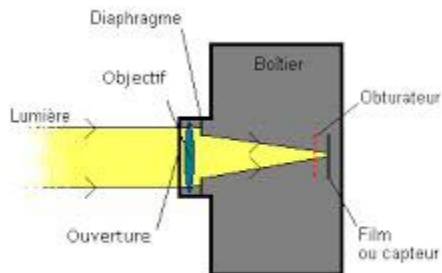
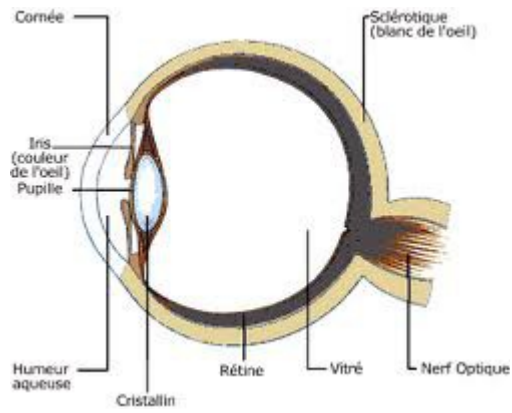
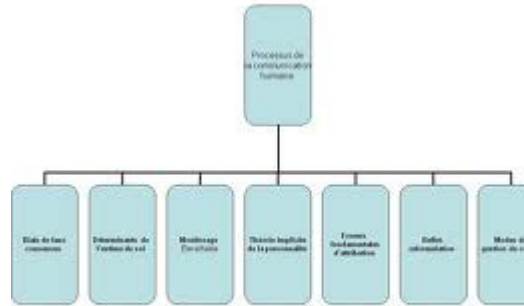


Verva çhime mordemi



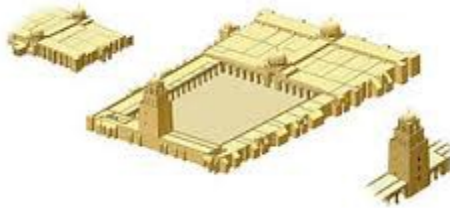
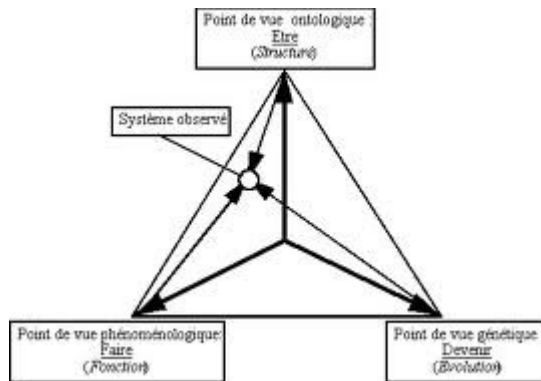
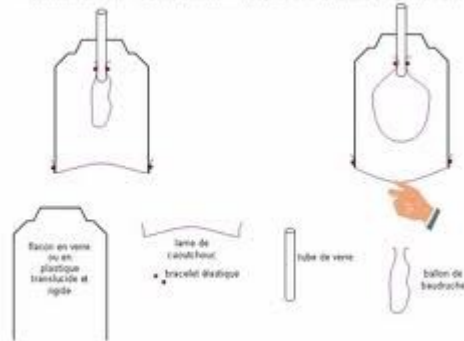


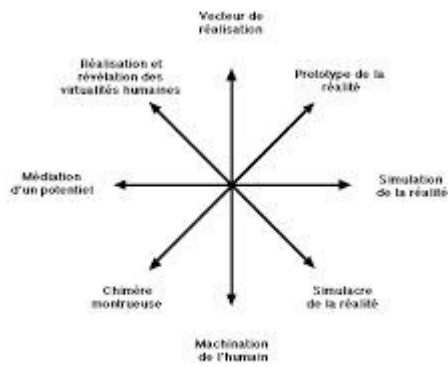
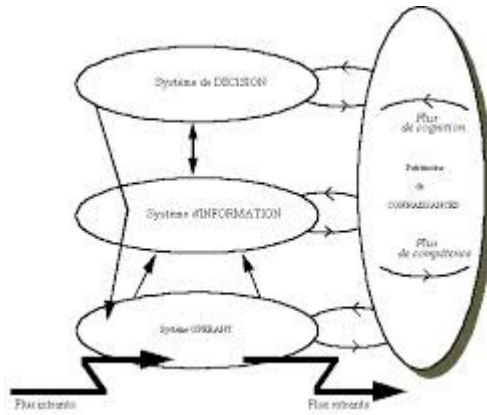




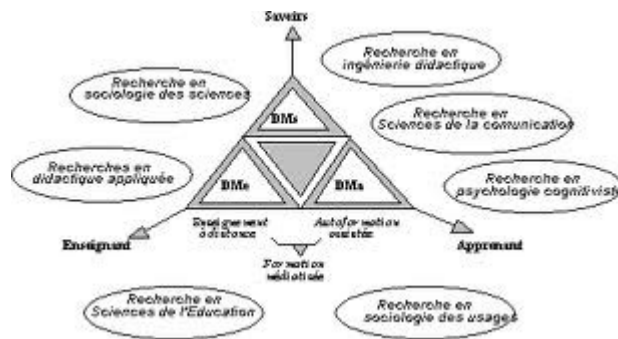
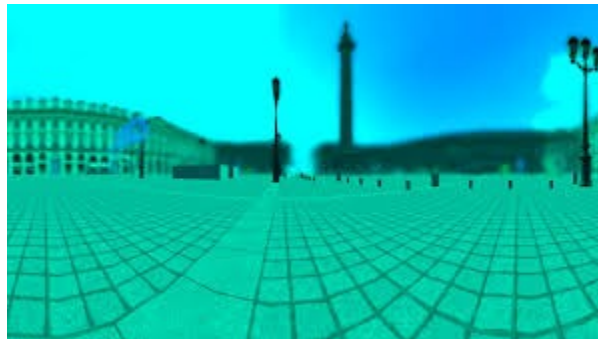


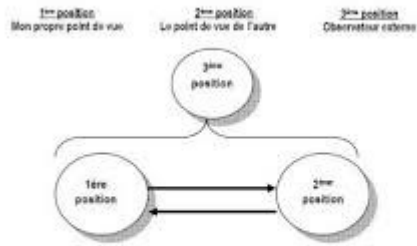
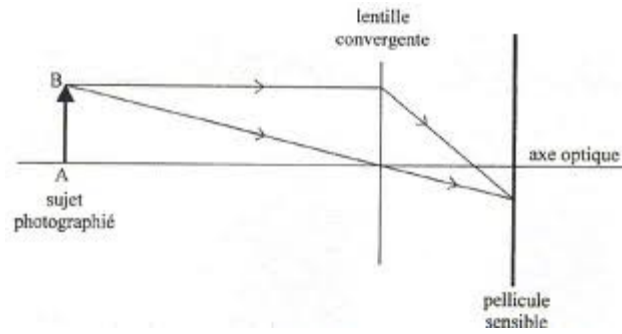
rôle du diaphragme - rôle des plèvres ??? (pression du liquide interpleural 0,5kPa)



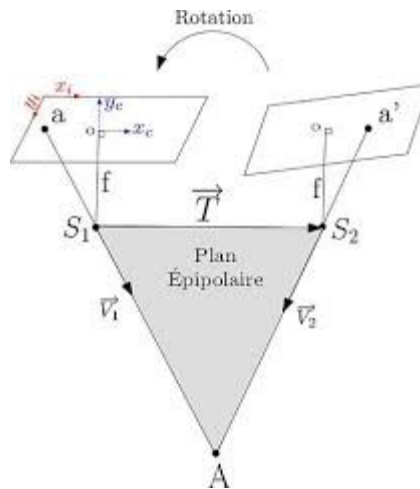
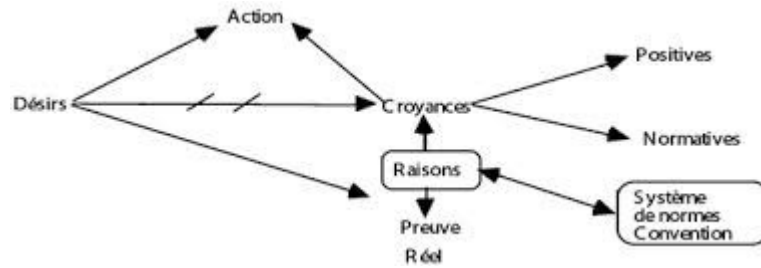


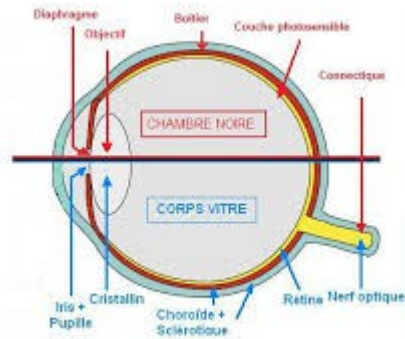
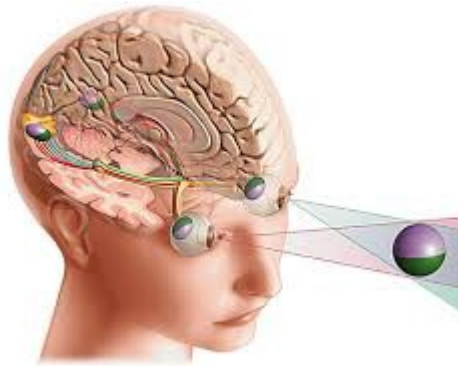
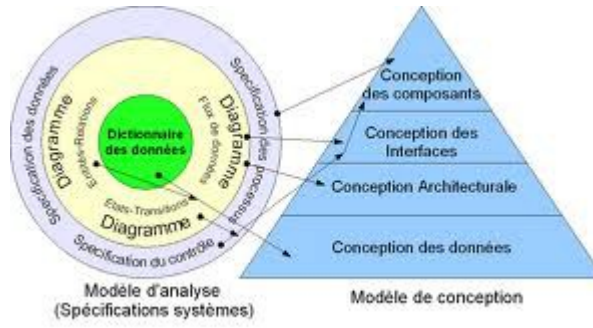
SENS DU VIRTUEL

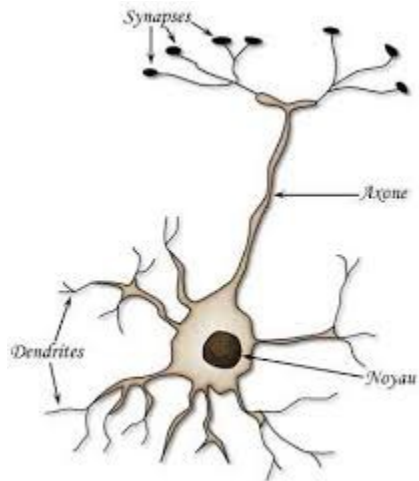
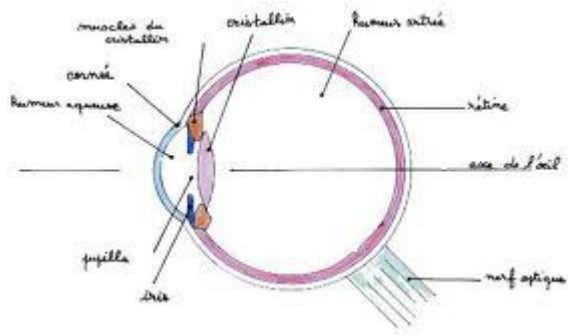


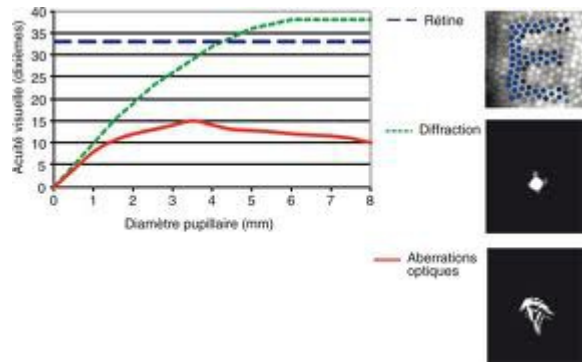
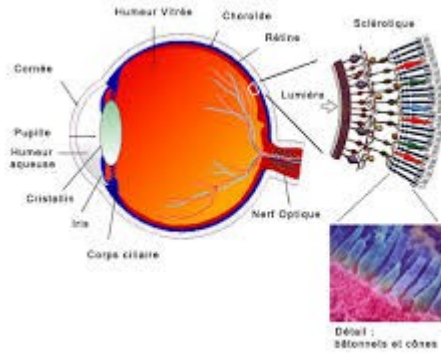


Une modélisation efficace implique d'explorer un phénomène particulier ou une pe à partir de multiples perspectives









II -astarei çutir peida bene ?

Galaxi asterei ve gaz este. Hire çî tèn lewe de. Osai hewr, pee hewru de ne osai gaz esto. Gaz ve toz ra bié te lewé. Astarei bene yene dina weşine, dodima mirene. Gaz grania hu esta. Asmen de germinié esta, serdina hu esta. Çutir rizino, çutir asmen ra astarei yene dina nu fame zanistio. Astarei este zof bereqine, girsé. Astarei este qiji é. Zere ne astaru de zovina astarei este. Pers kerdena zanisti na wa.

Dr Ali KILIÇ, Paris 4 05 2014